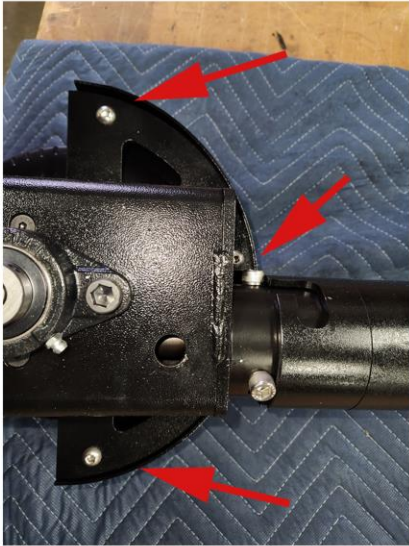


1



Remove the 3 cap screws securing the fender, using a 3/16 Allen wrench.

2



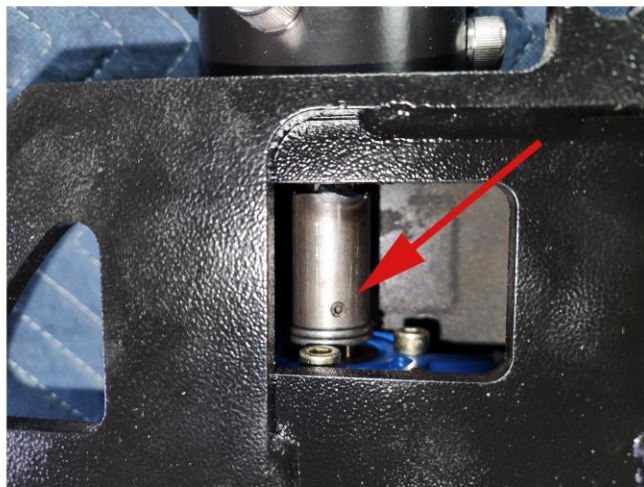
Loosen the two set screws on the bearing mounted on the fender, using a 1/8" Allen wrench

3



Remove the fender, the spacer and wheel.

4



Verify the driveshaft is secure to the gearbox with a 5/64 Allen wrench

5



Remove the bearing from the housing opposite the fender side, using a 3/8" Allen wrench. Loosen the 2 set screws, securing the axle with a 1/8" Allen wrench

6



Remove the axle and remove the 4 flathead screws, on both sides of the housing, securing the gearbox, using a 5/32 Allen wrench

7

Slide the gearbox out through the bottom and loosen the set screw, securing the driveshaft to the gear box, using a 5/64 Allen wrench